

PEDDER & SCAMPTON ARCHITECTS

Practice introduction

OUR PRACTICE

Pedder & Scampton Architects Ltd was established by Helen Pedder and Gillian Scampton in 1998.

The practice works in the commercial, community, education, residential, urban realm and private homes sectors.

Our portfolio demonstrates a long track record in designing community and regeneration related projects with a particular concern to bring good design to those who might not often experience this. Many of these projects are for homeless people and those with special needs (autism in particular). We have developed an informal network of advisors to support us in our design for those with autism.

To develop our designs we work hard to establish close working relationships with our clients and their user groups as well as the contractors and trades who actually make the building. This enables us to deliver schemes that are carefully tailored to the users' needs, practical and hard wearing and above all enjoyable. We involve the users where appropriate in the production of their new spaces.

We are well versed in squeezing the maximum benefit from tight budgets and are experienced in achieving planning consent. Our projects frequently create imaginative and enjoyable spaces from redundant or difficult sites.



pedder & scampton ARCHITECTS

UNITED HOUSE NORTH ROAD LONDON N7 9DP phone 020 7607 4156

Small office and commercial projects

Pedder & Scampton Architects has completed a range of commercial and office projects for charities and commercial organisations of different types and sizes.

As a small business ourselves we understand the needs and financial constraints on small businesses and their premises. We firmly believe that good design can help a small business 'look good' to the outside world whilst also creating an office or workplace that is efficiently laid out and easy and comfortable to work in.

Examples:

Creative workspaces under a 240m long flyover in the Docklands

Small brewery in Haringey.

Roof top extension for a developer to create an additional office floor.

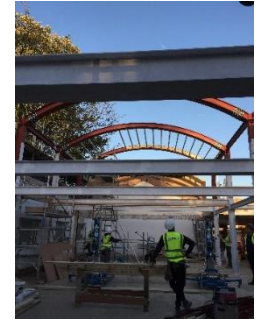
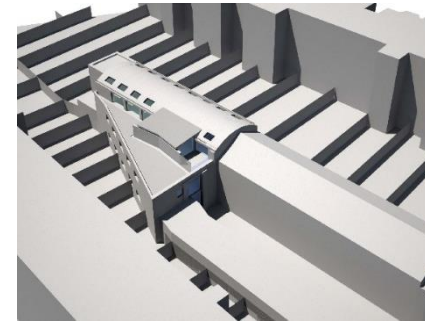
Shop front and shop fit out designs and construction.

Small food production unit, Willesden

Conversion of an old drill hall into a small ballet school.

Fit out of office space in London W1 for an education company

Café/restaurant conversion of an old water tower



Community, education and public spaces

Our experience includes many medium and small sized urban renewal projects in the London Boroughs. A number of these are 'mixed use' incorporating elements such as community rooms, external spaces, educational spaces and residential units that serve a variety of uses and users. This multi function/multi user approach is key to small scale urban regeneration at the local level to build stronger communities and enhance the local economy, contributing to individual commercial success. Projects at this scale also enable us to work with clients and user groups who might not normally get the opportunity to work with architects.

Examples:

Disability Hub building in Croydon with Autism wing

Multi disciplinary support service unit for families in Croydon

A multi use scheme we designed/built for a day centre for homeless families combined with a youth centre and housing estate community space in a former print works in Brent.

17 on-street recycling points for Haringey.

Proposals for cafes and restaurants. A recent design was for Southend on Sea for a café and flower kiosk in a cemetery

Autism day centre with surrounding garden workspaces in Henley

Horticultural therapy teaching building in Battersea Park for a charity working with residents from local boroughs with a wide range of mental and physical disabilities.

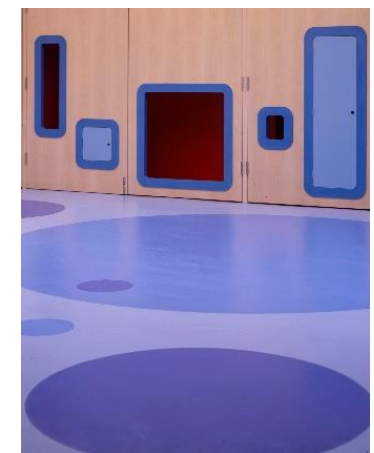
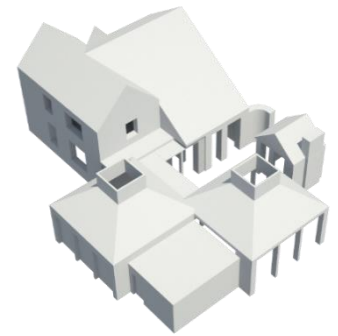
Computer teaching room for job seekers in Newcastle community centre

Training workshops for Crisis in London

Proposals for remodelling and extensions to primary schools in London and Southend

Proposals for extension and internal rearrangements to a GP hub in North London

Co-working with the young members of a local Youth activities provision charity to develop their ideas for the main entrance and activity/meeting space



Residential

Our residential projects have nearly all been for particular groups: those with autism, physical or mental disabilities, the young homeless, support accommodation for families with children in critical hospital care. Each design has to resolve not only the specialist requirements for housing for these particular users but also meet cost constraints and future adaptability for more general housing use.

Examples:

Conversion of two properties in Wembley into shared housing: one for a group with Korsakoff syndrome (a severe form of dementia), the other for a group with severe physical disabilities

Conversion and extension of a Victorian house to provide bedsits and group living for 6 people with autism

Proposal for a small housing development of 8 flats for independent living plus a more fully supported house of shared accommodation for those with autism.

Remodelling and extensions proposals for 6 YMCA hostels for 16-25 year olds

Improvements to the external spaces of a small housing estate in Kensal Town

Common parts improvements to three residential blocks, Cambridge Gate, Regents Park

Proposals for new block of 1 bed flats for Charity providing housing for those in the Book trade



CLIENT LIST

Commercial clients

Keystone Partnership
Pik, Moscow
Redemption Brewery
Regal Homes London
Archway small shop keepers
Estates & Agency Developments
Little Bird Film Company
Gems Education
Speck Delicatessen
Powergen
Griffin Stone Moscrop Ltd
Farebrother Chartered Surveyors/Cambridge Gate Management

Local Authorities and Housing Associations

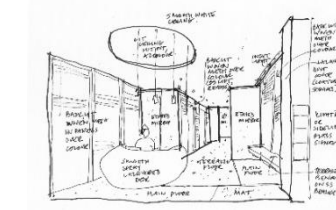
Greater London Authority
London Borough of Croydon
London Borough of Camden
London Borough of Brent
London Borough of Haringey
Southend-on-Sea Borough Council
Stadium Housing Association
Mosaic Housing Association
YMCA England & YMCA St Helen's
St Martin of Tours Housing Association

Charities, schools and other organisations

Christchurch Primary School NW3
Brent Private Tenants Rights Group
Meadow Well Community Centre
East Berkshire College
Thrive
Kingwood
Crisis

For more information please visit www.pedderscampton.com

01 2019



pedder & scampton ARCHITECTS

UNITED HOUSE NORTH ROAD LONDON N7 9DP phone 020 7607 4156